



SRI VAMSHIDHAR HIGH SCHOOL

Academic year (2020 – 2021)

Worksheet

Class: **X - ENGLISH**

Day – **28**

Date: **02.05.2020**

Brochure making

A **brochure** is a small book containing information or advertising material about a product or service. It's a promotional document, aimed at introducing a company or organization's offerings. It must be presented in a way that the person reading it will be intrigued by the product or service and want to learn more.

How to create brochure:

Steps :

1. Focus on a Topic
2. Create a grabbing/eye-catching Title
3. Be Specific
4. Mix Writing Styles
5. Consider including Testimonials
6. Include Pictures
7. End with a Call to Action

Create a brochure for 'opening a school'



SRI VAMSHIDHAR HIGH SCHOOL

Academic year (2020 – 2021)

Worksheet

Class: **X – HINDI**

Day – **28**

Date: **02.05.2020**

निम्नलिखित वाक्यों में पदबंध ढूँढकर पदबंध का नाम लिखिए –

१. सुनीता परिश्रमी और होशियार लड़की है।
२. वह बहुत जोर से बोलता है।
३. वह समुद्र की चट्टानों पर पहुँच गया।
४. बच्चा मैदान में खेल रहा होगा।
५. घोंसले में रहने वाली चिड़िया उड़ गई।
६. सूरज धीरे-धीरे डूबता जा रहा है।
७. गाँव से आई हुई लड़कियों में से कुछ चाय की शौकीन हैं।
८. सफ़ेद घोड़े पर बैठा हुआ सैनिक साहसी है।
९. आज तुम गहरे हरे रंग की साड़ी पहनो।
१०. हमेशा चुप रहने वाली मैं आज बोल पड़ी।
११. आजकल बाजार में बहुत मीठे संतरे आ रहे हैं।
१२. कक्षा में शोर मचाने वाले तुम आज क्यों चुप हो ?
१३. स्टेशन के चारों ओर तेज रोशनी का प्रबंध है।
१४. मुझे दो किलो पीसी हुई लाल मिर्ची चाहिए।
१५. बच्चा दूध पीकर सो गया।



SRI VAMSHIDHAR HIGH SCHOOL

Academic year (2020 – 2021)

Worksheet

Class: **X - TELUGU**

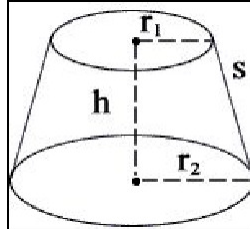
Day – **28**

Date: **02.05.2020**

- I. ఇతర దేశంలో స్థిరపడ్డ మీ మామయ్య చాలా రోజుల తరువాత ఈ దేశానికి వచ్చారు. మీ అమ్మ ఆనందానికి లెక్క లేదు. కానీ ఎక్కువ రోజులు ఉండకుండా వచ్చిన నాల్గవ రోజునే తిరిగి ప్రయాణమై వెళ్ళిపోయాడు. ఆ రోజు మీ అమ్మ చాలా బాధ పడింది. నీతో చాలాసేపు గడిపింది. వారి చిన్ననాటి ఆటలను, జ్ఞాపకాలను, పల్లెటూరి వాతావరణం మొత్తం నీకు వివరించింది. బాధను చూసి, చెప్పే విషయాలను విని నీలో కలిగిన ఆలోచనలను దినచర్య (డైరీ) రూపంలో రాయండి.

Note: Learn and write (ONE time) all the definitions/formulae in a notebook.

Frustum of a Cone:



Note: $\pi = \frac{22}{7}$

Formulae:

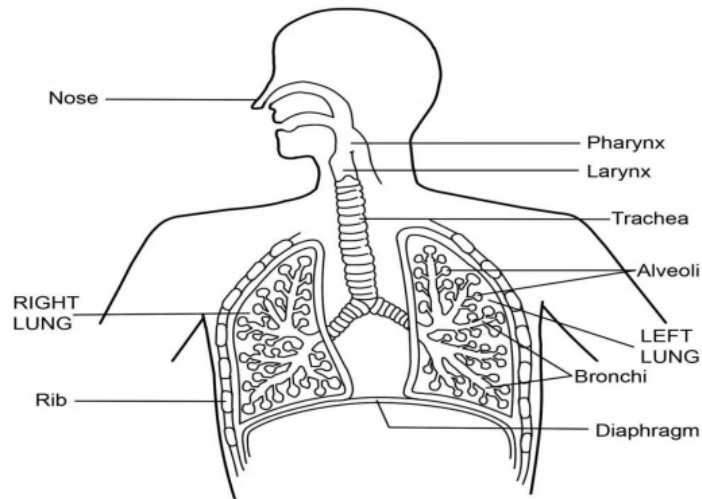
1. Curved surface area of the frustum of a cone = $\pi (r_1 + r_2) l$ Sq. Units
2. Total surface area of the frustum of a cone = $\pi (r_1 + r_2) l + \pi r_1^2 + \pi r_2^2$

Answer the following Questions

1. Find the curved surface of the frustum of a cone if $r_1 = 7 \text{ cm}$, $r_2 = 14 \text{ cm}$, $l = 5 \text{ cm}$
2. Find the curved surface of the frustum of a cone if $r_1 = 3 \text{ cm}$, $r_2 = 1 \text{ cm}$, $l = 2 \text{ cm}$
3. Find the total surface of the frustum of a cone if $r_1 = 4 \text{ cm}$, $r_2 = 3 \text{ cm}$, $l = 7 \text{ cm}$
4. Find the total surface of the frustum of a cone if $r_1 = 6 \text{ cm}$, $r_2 = 2 \text{ cm}$, $l = 14 \text{ cm}$

LIFE PROCESSES

1. Draw the structure of respiratory system two times and label it.



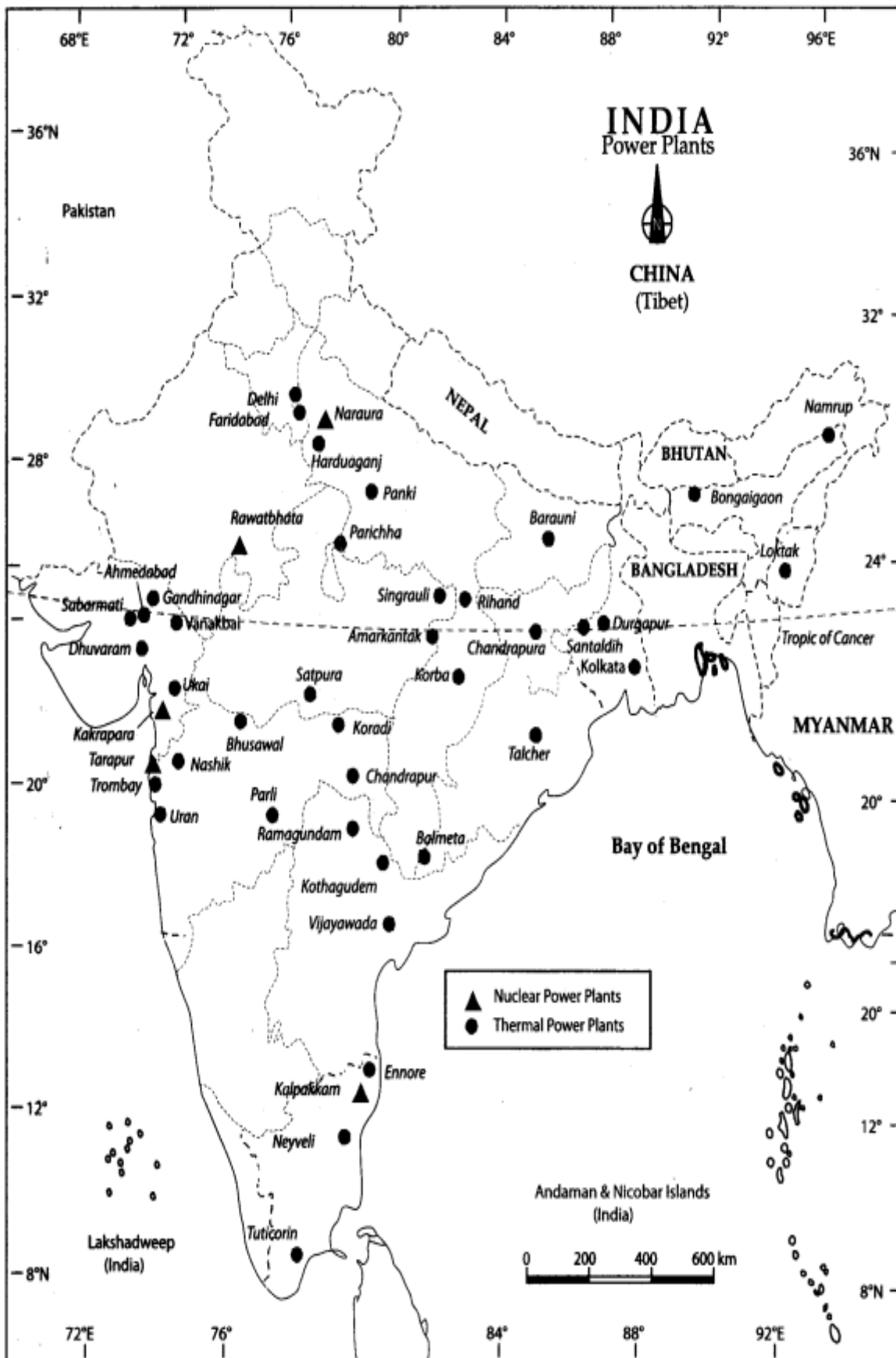
Geography: 5.Minerals and Energy Resources

Answer the question below given by looking at the three maps and write down in your rough notes

1. Map 1. Write minerals available in India
2. Map 2. Conventional sources of energy
3. Map3. Write 5 thermal and nuclear power plants









PART-A (EMPLOYABILITY SKILLS)

UNIT-III INFORMATION AND COMMUNICATION TECHNOLOGY SKILLS

Session-3 Care and maintenance of a computer

Computer systems require maintenance so that the system works efficiently. Poor maintenance may lead to system failure.

Regular care and maintenance may help you detect any issues at an early stage and keep it functioning well.

I. Fill in the blanks with the given clues:-

interface, general, virus, system, unwanted

- 1) An operating system acts as an _____ between a hardware and a software. **CBSE 2019**
- 2) A presentation software is a type of _____ purpose software.
- 3) _____ infects or destroys data in a computer without the permission or knowledge.
- 4) The operating system is a type of _____ software.
- 5) Mails from _____ and un-warranted sources should be deleted.

II. Multiple choice questions:-

- 1) Deleted files and folders are moved to _____
a) Recycle bin b) My computer c) Desktop d) Favorites
- 2) The cleaning of software installed in the computer cannot be achieved by _____
a) Disk clean up b) Back-up
c) Cleaning CPU cabinet d) Installing antivirus software
- 3) Which of the following is not a component of Windows desktop?
a) Taskbar b) Icons c) Wallpaper d) Virus
- 4) CUI refers to _____
a) Character user interface b) Common user interface
c) Clever user interface d) Create user interface